

# Quick Delivery Townhome



## *The Avery - 4D*

3 bedroom ~ 3.5 bath  
2630 sqft  
2-car garage

**\$469,900**

- Hardwood throughout the first floor
- Crown molding
- Elegant fireplace with custom mantel
- Gourmet kitchen with granite and stainless steel appliances
- Spacious master bedroom suite with walk-in closet
- Energy efficient *Green* home with gas heat
- Finished lower level with full bath
- Furnishings negotiable



Photos may show optional features.



Gary Emerito 860-716-7601 [gemerito@bhhsne.com](mailto:gemerito@bhhsne.com)  
Susie Ouellette 860-462-8200 [susanouellette@bhhsne.com](mailto:susanouellette@bhhsne.com)  
Karen Mendes 860-944-8585 [karenmendes@bhhsne.com](mailto:karenmendes@bhhsne.com)

©2017 An independently operated member of BHH Affiliates. Equal Housing Opportunity.  
Prices, terms and availability subject to change. (Dec 2017-revised)

LANDWORKS DEVELOPMENT



NELSON CONSTRUCTION

# Quick Delivery Options

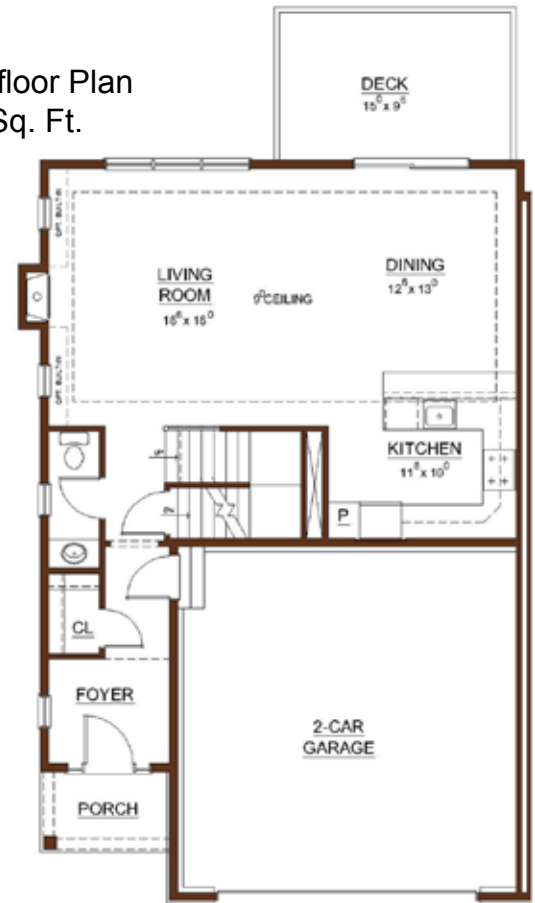
## Pre-Selected Options

2 Recessed lights w/dimmer in 1st Floor Hall	\$250
4 Recessed lights w/dimmer in Master Bedroom	500
2 Recessed lights w/dimmer in Master Bathroom	450
Recessed lights w/dimmer in 2nd Floor Hall	500
Under-cabinet lighting in Kitchen	575
Garage Entry Keypad	75
Bellera Vibrant Stainless Kitchen Faucet	50
Devonshire faucet in Powder Room	30
Devonshire comfort height toilet in Powder Room	110
Devonshire faucet package in Master Bath	135
Devonshire comfort height toilet in Master Bath	110
Arlington Maple cabinets in Kitchen	760
Cambria countertop in Kitchen	1,745
Arlington Maple cabinets in Master Bath	190
Upgraded countertop in Master Bath	665
Gas Range in Kitchen	430
French door refrigerator w/ice & water	570
Group IV Kitchen backsplash tile	275
Group I Master Bath floor tile	110
Group I Master Bath shower/tub tile	195
Universal Mosaic in Master Bath tub/shower	535
HWF in 2nd floor hall	1,035
8 lb. carpet pad	415
Crown molding in 2nd floor hall	580
Kitchen built-in shelf unit	950
Lever door hardware	440
Ceiling fan in Master Bedroom	300
Credit 1 paint color	<200>
Master WIC shelving option I	205
Cabinet framed mirrors in Master Bath	725
Madison bath accessories	80
Finished lower level	22,000
Small section of open rail at lower level	No Extra Charge
Group I carpet in lower level	655
Finished bathroom in lower level	8,000
Harmony cherry cabinet in lower level bath	235
Designer color countertop in lower level bath	235
Hi-line comfort height toilet in lower level bath	25

**Total:** \$43,940

Base Price	\$439,900
Plus Options	+\$43,940
Total	\$483,840
<b>Model Discount</b>	<b>-\$13,900</b>
<b>Sale Price</b>	<b>\$469,900</b>

First floor Plan  
835 Sq. Ft.



Second floor Plan 1,311 Sq. Ft.

